

# ÉLEVÉ MAISON

URBAN LUXURY

ÉVÉ MAISON



# GALAXY IDEOLOGY

## VISION

Our vision is to be the most leading and honest real estate company, persistently providing our customers with the highest quality developments.

## MISSION

As a real estate company, our mission is to provide our customers with iconic and technologically advanced luxury spaces.

We aim to develop outstanding social environment with the core value of bringing people closer. We are in pursuit of urban living spaces that integrates residential, commercial and entertainment spaces that will enhance the quality of life and constantly evolve to suit customer demands.

## VALUES



QUALITY



TRANSPARENCY



ON TIME



SUSTAINABILITY



CUSTOMER CENTRIC



ICONIC DESIGNS





## A GALAXY OF URBAN LUXURY

Renowned all over for Quality, Prestige and Luxury, Galaxy Builders have built a strong name over the years in the realm of housing development and construction. Completing over 13 lakh sq.ft. constructed space and bringing home happiness to more than 650 happy customers in Calicut, Galaxy Builders have taken utmost care in adding a touch of creativity, aesthetics and ethics to every architectural excellence achieved so far. The Ritz Marina, Pallazio Azure and Magnum Opus are luxury landmarks across Calicut that continues to encompass happiness and a luxury lifestyle for the fortunate few.



#### DISCLAIMER\*

PICTURES ARE ARTISTS PERCEPTION OF THE CONSTRUCTION WHEN COMPLETED. THIS IS FOR REPRESENTATIVE PURPOSES ONLY AND MAY DIFFER ACCORDING TO CHANGES IN CONSTRUCTION.



# ÉLEVÉ MAISON

## URBAN LUXURY

### EXCLUSIVE LUXURY APARTMENT

Taking luxury to the sky like never before.

Eleve Maison which directly translates to 'mansion in the sky', takes it up a notch with its top of the line ultra-luxury apartments. Eleve Maison promises to fulfill the dream of having a home that stands apart from the rest. With 52 of the city's most sought after apartments spread across 23 floors of vertical living space in 76.2 cents of land, it fulfills your desire for the most accessible, pleasurable living that comes with top of the line features and automation enhancements.

With our various range of apartments to choose from, you can pick the kind of apartment you dream of calling a home. Located near Sarovaram biopark, Eranhilalam, it comes with its rich connectivity to everything you need, from transportation to restaurants and other daily necessities.

Eleve Maison with all the characteristics of Galaxy builders' luxurious homes, state-of-the-art luxury living spaces and the latest technological accessibility enhancements makes it the ultimate home for someone who doesn't settle for anything but the best.

SAROVARAM BIO PARK ROAD, ERANHILAM, CALICUT





# GRAND LOBBY FOR THE URBANISTA

Walk into Eleve Maison and experience a refreshing urban design laced with luxury in every detail. Everything from the beautiful high ceiling interiors to the comfortable air-conditioned seating areas with cozy furnishing, the lobby sets the standard for a complete luxury experience.



## PROJECT HIGHLIGHTS

1. MODERN FACADE DESIGN
2. FLOOR TO CEILING GLASS AREAS FOR EVERY APARTMENT
3. NIGHT TIME FACADE ILLUMINATION
4. SMART HOME AUTOMATION FOR APARTMENTS
5. GRAND LOBBY WITH HIGH CEILING & AC
6. LUXURIOUS CLUB HOUSE
7. SOCIAL SPACE / PARTY AREA WITH AC
8. BUSINESS CENTRE
9. CONFERENCE ROOM
10. GLASS SHEATHED BALCONIES
11. INDOOR GAMES
12. PRIVATE MOVIE LOUNGE
13. WATERFALL FROM INFINITY SWIMMING POOL
14. CHILDREN'S PLAY AREA
15. HIGH SPEED ELEVATORS
16. ENERGY EFFICIENT COMMON AREA LIGHTING
17. NEW GENERATION SECURITY SYSTEMS
18. PIPELINE LPG

### DISCLAIMER\*

PICTURES ARE ARTIST'S PERCEPTION OF THE CONSTRUCTION WHEN COMPLETED. THIS IS FOR REPRESENTATIVE PURPOSES ONLY AND MAY DIFFER ACCORDING TO CHANGES IN CONSTRUCTION.  
ABOVE MENTIONED DETAILS ARE PRELIMINARY OFFER ON THE CONCEPTUAL STAGE OF THE BUILDING. CHANGES CAN BE MADE AT THE DISCRETION OF THE BUILDER. CHANGES WILL BE INTIMATED AND WILL REFLECT IN THE SALE AGREEMENT.



# CLUB HOUSE FOR THE URBANISTA

Dedicated to take away all your stress, relaxing with your family and friends or hitting your fitness goals, the Eleve Maison trendy and upscale club house is equipped with all the facilities that make it ideal for residents with different interests to come together and do what helps them have a great time.

## CLUB HOUSE FEATURES

1. INFINITY SWIMMING POOL
2. POOL VIEW ZEN GARDEN FOR YOGA
3. POOL SIDE CAFE
4. SPA ROOM
5. AC GYM WITH CROSS TRAINING / HIIT EQUIPMENTS
6. JACUZZI ON POOL DECK
7. STEAM BATH
8. SAUNA
9. INDOOR GAMES
10. VIDEO GAMING AREA

### DISCLAIMER\*

PICTURES ARE ARTISTS PERCEPTION OF THE CONSTRUCTION WHEN COMPLETED. THIS IS FOR REPRESENTATIVE PURPOSES ONLY AND MAY DIFFER ACCORDING TO CHANGES IN CONSTRUCTION.

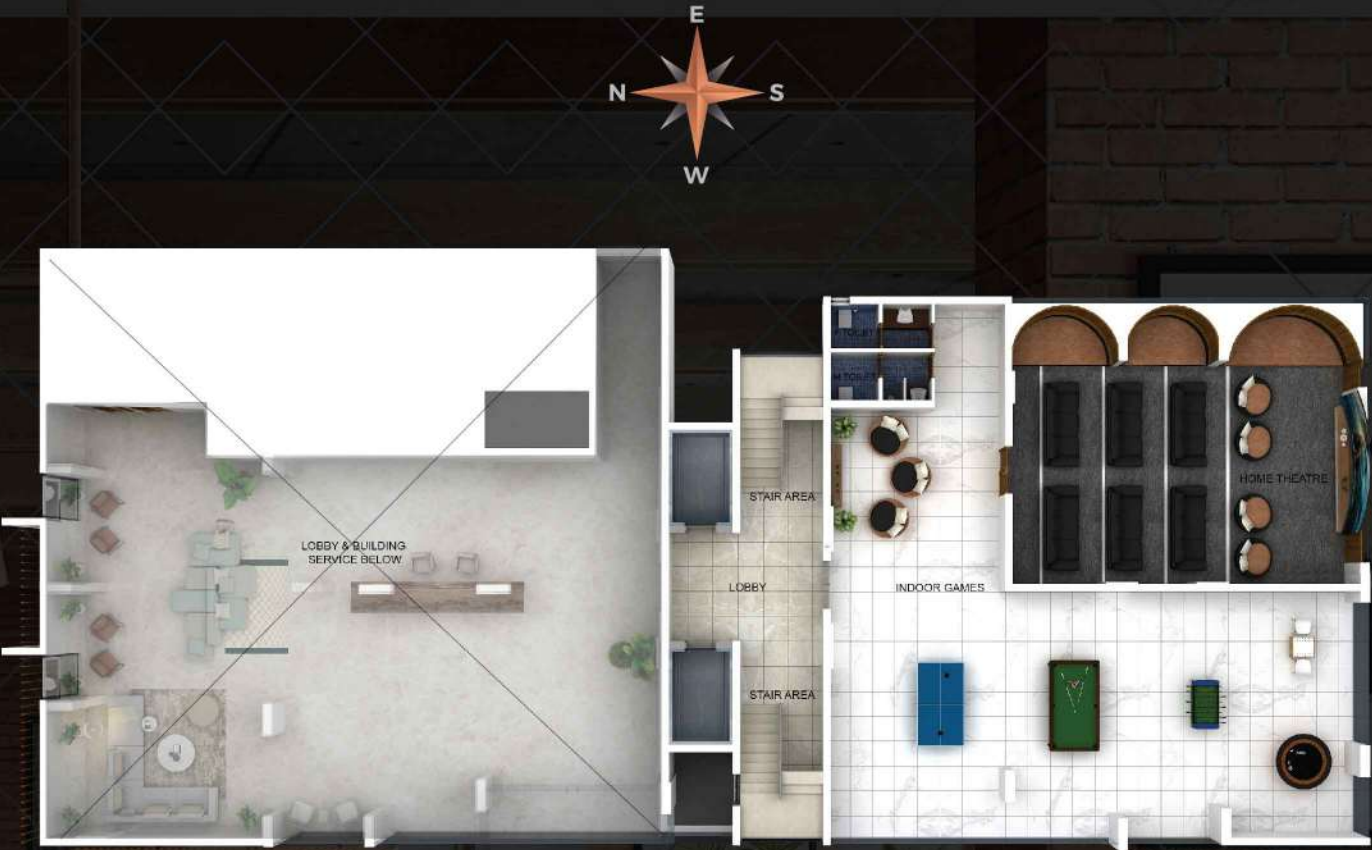
ABOVE MENTIONED DETAILS ARE PRELIMINARY OFFER ON THE CONCEPTUAL STAGE OF THE BUILDING. CHANGES CAN BE MADE AT THE DISCRETION OF THE BUILDER. CHANGES WILL BE INTIMATED AND WILL REFLECT IN THE SALE AGREEMENT.



# ENTERTAINMENT ZONE FOR THE URBANISTA

Let your competitive spirit run wild at Eleve Maison’s entertainment zone that offers various indoor games, dedicated video gaming area and a home theater. Immerse in a luxurious cinematic experience on a large screen with 18 reclining sofas and 7.1 audio surround sytem for your action packed movies. For adults and children alike, this indoor entertainment zone is a guaranteed spot to have a ton of fun.

## CLUB HOUSE PLAN



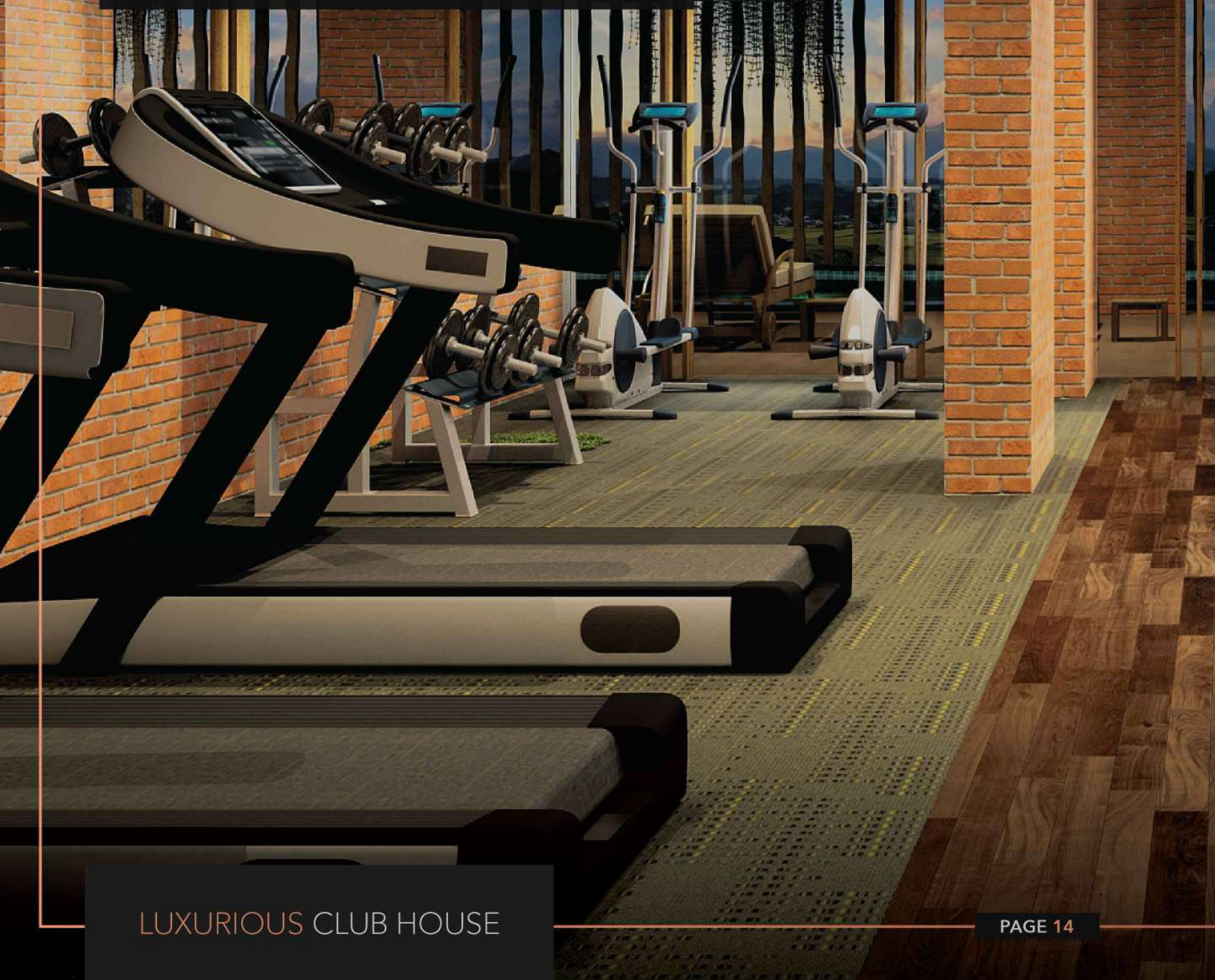
## FIRST FLOOR PLAN

DISCLAIMER\*  
PICTURES ARE ARTISTS PERCEPTION OF THE CONSTRUCTION WHEN COMPLETED. THIS IS FOR REPRESENTATIVES PURPOSES ONLY AND MAY DIFFER ACCORDING TO CHANGES IN CONSTRUCTION.



# FITNESS ROOM FOR THE URBANISTA

The concept of a gym has evolved, and our customers like different forms of workouts that suit them personally. The Eleve Maison fitness center is equipped with all the modern fitness methods like cross training/High Intensity Interval Training (HIIT) equipment in addition to the traditional weight training and cardio equipment.



## CLUB HOUSE PLAN



SECOND FLOOR PLAN

DISCLAIMER\*

PICTURES ARE ARTISTS PERCEPTION OF THE CONSTRUCTION WHEN COMPLETED. THIS IS FOR REPRESENTATIVES PURPOSES ONLY AND MAY DIFFER ACCORDING TO CHANGES IN CONSTRUCTION.



# SMART HOME AND SECURITY FOR THE URBANISTA

With a smart security automation implemented home, you have the option of controlling everything from the palm of your hand. Mobile apps help you keep your home and family secure throughout the day wherever you are while also allowing you to have the simple luxuries of controlling things like lighting or air conditioning.



## SMART HOME

1. MOBILE APP FOR SMART HOME CONTROL
2. LIGHTING CONTROL
3. AC CONTROL
4. SMOKE / FIRE ALERT
5. BIO METRIC DOOR LOCK
6. USB CHARGING POINTS

### OPTIONAL FEATURES\* :

7. CURTAIN CONTROL
8. MOOD LIGHTING
9. IP CAMERA APARTMENT MONITORING

## SMART SECURITY

1. CCTV SURVEILLANCE
2. ACCESS CONTROLLED LOBBY
3. BOOM BARRIER
4. BIO METRIC TENANT ENTRY
5. VIDEO DOOR PHONE WITH CCTV INPUT
6. ON DEMAND GUEST ACCESS FROM VDP
7. BIO METRIC APARTMENT MAIN DOOR LOCK
8. 24HRS SECURITY GUARDS

### DISCLAIMER\*

PICTURES ARE ARTISTS PERCEPTION OF THE CONSTRUCTION WHEN COMPLETED. THIS IS FOR REPRESENTATIVES PURPOSES ONLY AND MAY DIFFER ACCORDING TO CHANGES IN CONSTRUCTION.

ABOVE MENTIONED DETAILS ARE PRELIMINARY OFFER ON THE CONCEPTUAL STAGE OF THE BUILDING. CHANGES CAN BE MADE AT THE DISCRETION OF THE BUILDER, CHANGES WILL BE INTIMATED AND WILL REFLECT IN THE SALE AGREEMENT.

\* OPTIONAL FEATURE : AVAILABLE AT AN EXTRA COST ON REQUEST



# APARTMENT FOR THE URBANISTA

Eleve Maison is all about fulfilling your dreams of living in the most luxurious apartment. With multiple sizes of apartments available, you can opt for the size you need without missing out on any of the features that make your home incredible.

## APARTMENT FEATURES

1. SMART HOME AUTOMATION
2. BIO METRIC/ FINGER PRINT MAIN DOOR LOCK
3. APARTMENTS RANGING FROM 1510 SQFT. TO 3485 SQFT.
4. WELL LIT & VENTILATED ROOMS WITH LARGE WINDOWS
5. FLOOR TO CEILING GLASS IN PRE DESIGNATED BEDROOM
6. UPVC / HEAVY GRADE ALUMINIUM SLIDING WINDOWS & FRENCH WINDOWS
7. LUXURY RANGE CP & SANITARY FITTINGS
8. AESTHETIC LAYOUT
9. GLASS SHEATHED BALCONIES
10. FLOORING CUSTOMISATION - MATT/GLOSSY/SATIN/WOOD
11. VIDEO DOOR PHONE & CCTV SURVEILLANCE
12. GUEST ACCESS CONTROL
13. FIRE/SMOKE/ GAS DETECTORS
14. FIRE SAFETY SPRINKLERS
- OPTIONAL FEATURES\* :
15. FURNISHED KITCHEN
16. AUTOMATED CURTAIN
17. IP CAMERA APARTMENT MONITORING
18. HOME AUTOMATION CUSTOMISATION
19. JACUZZI / WHIRLPOOL

### DISCLAIMER

PICTURES ARE ARTISTS PERCEPTION OF THE CONSTRUCTION WHEN COMPLETED, THIS IS FOR REPRESENTATIVE PURPOSES ONLY AND MAY DIFFER ACCORDING TO CHANGES IN CONSTRUCTION.

ABOVE MENTIONED DETAILS ARE PRELIMINARY OFFER ON THE CONCEPTUAL STAGE OF THE BUILDING. CHANGES CAN BE MADE AT THE DISCRETION OF THE BUILDER. CHANGES WILL BE INTIMATED AND WILL REFLECT IN THE SALE AGREEMENT.

\* OPTIONAL FEATURE : AVAILABLE AT AN EXTRA COST ON REQUEST



# SITE PLAN



LOCATION : SAROVARAM BIO PARK ROAD, ERANHIPALAM  
LAND EXTENT = 76.2 CENTS



# TYPICAL FLOOR PLAN



## DISCLAIMER\*

PICTURES ARE ARTISTS PERCEPTION OF THE CONSTRUCTION WHEN COMPLETED. THIS IS FOR REPRESENTATIVES PURPOSES ONLY AND MAY DIFFER ACCORDING TO CHANGES IN CONSTRUCTION.



## TYPE A, 3BHK



SUPER BUILT UP AREA : 1825 sqft CARPET AREA : 1280 sqft

MASTER BEDROOM BALCONY ORIENTATION

NORTH SIDE BALCONY : 3,5,7,9 AND 11<sup>TH</sup> FLOOR WEST SIDE BALCONY : 2,4,6,8,10 AND 12<sup>TH</sup> FLOOR

## TYPE B, 3BHK



SUPER BUILT UP AREA : 1825 sqft CARPET AREA : 1280 sqft

MASTER BEDROOM BALCONY ORIENTATION

NORTH SIDE BALCONY : 3,5,7,9 AND 11<sup>TH</sup> FLOOR EAST SIDE BALCONY : 2,4,6,8,10 AND 12<sup>TH</sup> FLOOR

DISCLAIMER\*

PICTURES ARE ARTISTS PERCEPTION OF THE CONSTRUCTION WHEN COMPLETED. THIS IS FOR REPRESENTATIVES PURPOSES ONLY AND MAY DIFFER ACCORDING TO CHANGES IN CONSTRUCTION.



## TYPE C, 2BHK



SUPER BUILT UP AREA : 1510 sqft CARPET AREA : 1060 sqft

MASTER BEDROOM BALCONY ORIENTATION

SOUTH SIDE BALCONY : 3,5,7,9 AND 11<sup>TH</sup> FLOOR EAST SIDE BALCONY : 2,4,6,8,10 AND 12<sup>TH</sup> FLOOR

## TYPE D, 2BHK



SUPER BUILT UP AREA : 1510 sqft CARPET AREA : 1060 sqft

MASTER BEDROOM BALCONY ORIENTATION

SOUTH SIDE BALCONY : 3,5,7,9 AND 11<sup>TH</sup> FLOOR WEST SIDE BALCONY : 2,4,6,8,10 AND 12<sup>TH</sup> FLOOR

DISCLAIMER\*

PICTURES ARE ARTISTS PERCEPTION OF THE CONSTRUCTION WHEN COMPLETED. THIS IS FOR REPRESENTATIVES PURPOSES ONLY AND MAY DIFFER ACCORDING TO CHANGES IN CONSTRUCTION.



## SKY MANSION HIGHLIGHTS

1. MANSION LIKE APARTMENT OF 3485 SQFT, 4BHK
2. SMART HOME ENABLED
3. DUPLEX
4. ONE APARTMENT ENTRY PER FLOOR
5. FLOOR TO CEILING GLASS FACADE FOR 3 BEDROOMS & KITCHEN
6. 2 MASTER SUITE BEDROOMS
7. 2 LIVING ROOMS UPPER/LOWER
8. TERRACE GARDEN WITH DOUBLE FLOOR HEIGHT
9. IN-HOUSE MAID'S ROOM, TOILET & WORK AREA

### EXTRA OPTIONAL FEATURES\* :

10. PRIVATE IN-HOUSE ELEVATOR
11. JACUZZI ON TERRACE GARDEN

#### DISCLAIMER\*

PICTURES ARE ARTISTS PERCEPTION OF THE CONSTRUCTION WHEN COMPLETED. THIS IS FOR REPRESENTATIVES PURPOSES ONLY AND MAY DIFFER ACCORDING TO CHANGES IN CONSTRUCTION.

ABOVE MENTIONED DETAILS ARE PRELIMINARY OFFER ON THE CONCEPTUAL STAGE OF THE BUILDING. CHANGES CAN BE MADE AT THE DISCRETION OF THE BUILDER, CHANGES WILL BE INTIMATED AND WILL REFLECT IN THE SALE AGREEMENT.

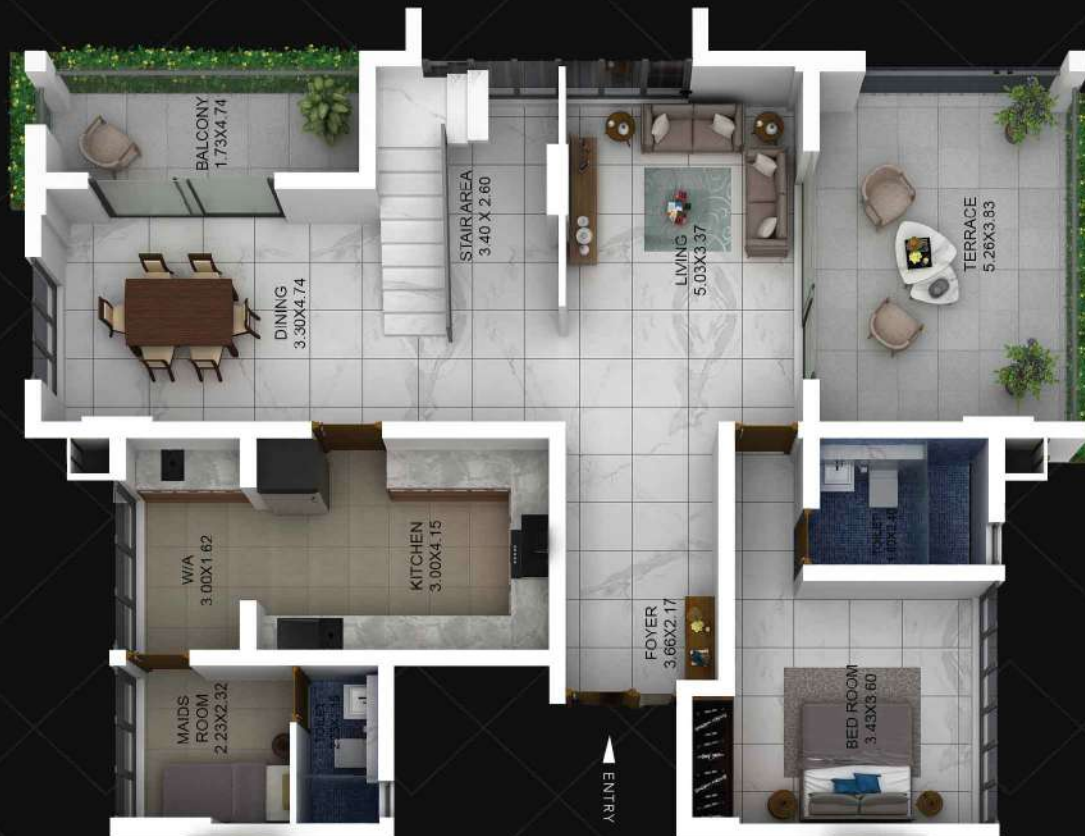
\* OPTIONAL FEATURE : AVAILABLE AT AN EXTRA COST ON REQUEST



# SKY MANSION, 4BHK TYPE LOWER LIVING



UPPER



LOWER

# SKY MANSION, 4BHK TYPE LOWER LIVING

ISOMETRIC VIEW



UPPER



LOWER

4BHK DUPLEX . LOWER FLOOR WITH LIVING AREA . UPPER FLOOR BEDROOMS

**SUPER BUILT UP AREA : 3485 sqft** **CARPET AREA : 2440 sqft**

ACCESS FLOOR : 13,15,17,19 AND 21<sup>ST</sup> FLOOR

With Eleve Maison's signature urban design, each floor consists of an entry to a single apartment only. The living spaces are on the lower floor while the bedrooms are on the upper floor.

DISCLAIMER\*

PICTURES ARE ARTISTS PERCEPTION OF THE CONSTRUCTION WHEN COMPLETED. THIS IS FOR REPRESENTATIVES PURPOSES ONLY AND MAY DIFFER ACCORDING TO CHANGES IN CONSTRUCTION.



# SKY MANSION, 4BHK TYPE UPPER LIVING

# SKY MANSION, 4BHK TYPE UPPER LIVING

UPPER



ISOMETRIC VIEW

UPPER



LOWER

LOWER



4BHK DUPLEX . UPPER FLOOR WITH LIVING AREA . LOWER FLOOR BEDROOMS

**SUPER BUILT UP AREA : 3485 sqft**    **CARPET AREA : 2440 sqft**

ACCESS FLOOR : 14,16,18,20 AND 22<sup>ND</sup> FLOOR

With Eleve Maison's signature urban design, each floor consists of an entry to a single apartment only. The living spaces are on the upper floor while the bedrooms are on the lower floor.

DISCLAIMER\*

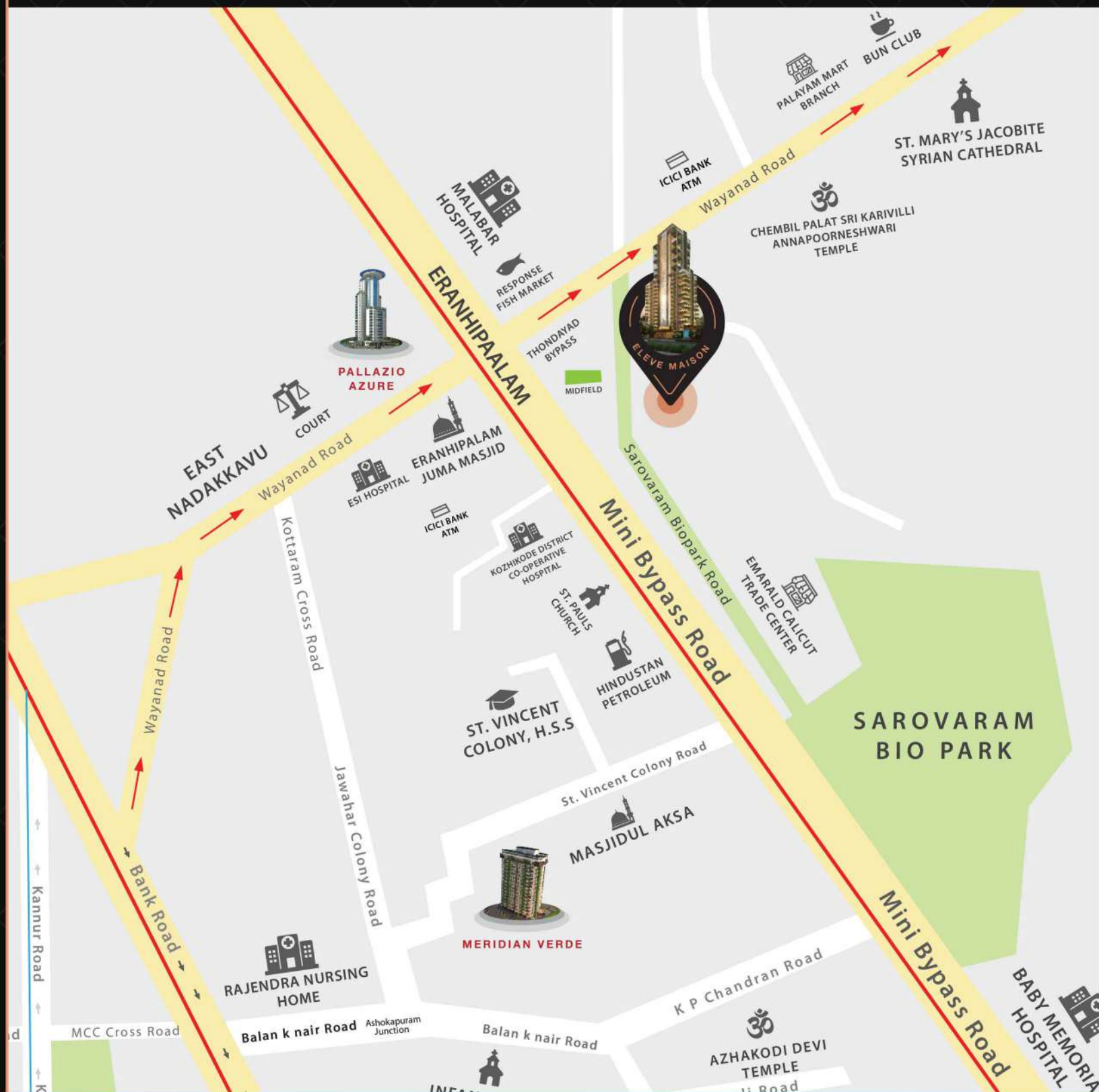
PICTURES ARE ARTISTS PERCEPTION OF THE CONSTRUCTION WHEN COMPLETED. THIS IS FOR REPRESENTATIVES PURPOSES ONLY AND MAY DIFFER ACCORDING TO CHANGES IN CONSTRUCTION.



## LOCATION MAP

### LOCATION FOR THE URBANISTA

The location of Eleve Maison is what makes its ultraluxury apartments the perfect place to call home. With instant access to the main roads right outside, it makes accessibility to transport and distance from anything you need, extremely simple. The prime location also gives you walkable access to everyday necessities like grocery stores, banks, hospitals, etc.



#### DISCLAIMER

PICTURES ARE ARTISTS PERCEPTION OF THE CONSTRUCTION WHEN COMPLETED. THIS IS FOR REPRESENTATIVE PURPOSES ONLY AND MAY DIFFER ACCORDING TO CHANGES IN CONSTRUCTION.













# ÉLEVÉ MAISON

URBAN LUXURY

LEO PARADISE, P.T.USHA ROAD, CALICUT, KERALA, INDIA. PIN : 673 032

CALL US : 99470 55333 , 95260 55222 , 99610 55222 EMAIL US : INFO@GALAXY-BUILDERS.COM

[WWW.GALAXY-BUILDERS.COM](http://WWW.GALAXY-BUILDERS.COM)